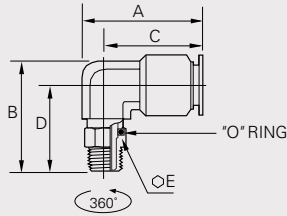
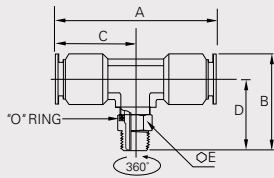


360° Swivel Elbow



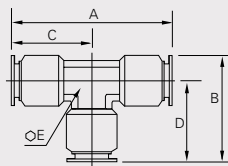
Tube O.D. in	NPT	Part Number	A in	B in	C in	D in	E in
5/32	1/8	87912	1.16	1.15	0.94	0.93	7/16
5/32	1/4	87914	1.16	1.16	0.94	0.94	9/16
1/4	1/8	87942	1.20	1.17	0.98	0.93	7/16
1/4	1/4	87944	1.20	1.21	0.98	0.96	9/16
1/4	3/8	87946	1.27	1.21	0.98	0.96	11/16
3/8	1/8	87962	1.60	1.38	1.31	1.04	7/16
3/8	1/4	87964	1.60	1.48	1.31	1.14	9/16
3/8	3/8	87966	1.67	1.60	1.31	1.26	11/16
3/8	1/2	87968	1.67	1.76	1.31	1.42	7/8
1/2	1/4	87984	1.99	1.65	1.54	1.23	9/16
1/2	3/8	87986	1.99	1.69	1.54	1.27	11/16
1/2	1/2	87988	1.99	1.94	1.54	1.52	7/8

Male Swivel Branch Tee



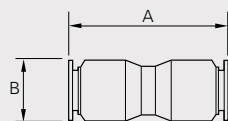
Tube O.D. in	NPT	Part Number	A in	B in	C in	D in	E in
5/32	1/8	87212	1.88	1.16	0.94	0.94	7/16
1/4	1/8	87242	1.96	1.18	0.98	0.94	7/16
1/4	1/4	87244	1.96	1.23	0.98	0.99	9/16
3/8	1/4	87264	2.61	1.48	1.31	1.14	9/16
3/8	3/8	87266	2.61	1.60	1.31	1.26	11/16
1/2	1/4	87284	3.08	1.65	1.54	1.23	9/16
1/2	3/8	87286	3.08	1.69	1.54	1.27	11/16
1/2	1/2	87288	3.08	1.91	1.54	1.49	7/8

Union Tee



Tube O.D. in	Part Number	A in	B in	C in	D in	E in
5/32	86411	1.88	1.16	0.94	0.94	23/64
1/4	86444	1.96	1.22	0.98	0.98	23/64
3/8	86466	2.61	1.65	1.31	1.31	1/2
1/2	86488	3.08	1.97	1.54	1.54	5/8

Straight Union



Tube O.D. in	Part Number	A in	B in
5/32	86211	1.70	0.38
1/4	86244	1.74	0.50
3/8	86266	2.14	0.69
1/2	86288	2.68	0.88